

Traverse

Fabrics CAMENGO

Collection

[ISOMETRIE Designs](#)

Colors

CRAIE

Reference

38870170

Composition

52 % VI ; 31 % PES ; 14 % CO ; 3 % LI

Useful width

137 cm / 54 Inches

Match



Martindale

60000

Martindale Upholstery : superior or equal to 40 000 cycles (Martindale) and superior or equal to 30,000 double rubs (Wyzenbeek)

Wyzenbeek

80000

Pattern direction

Non-railroaded

Weight in g/m²

415

Use

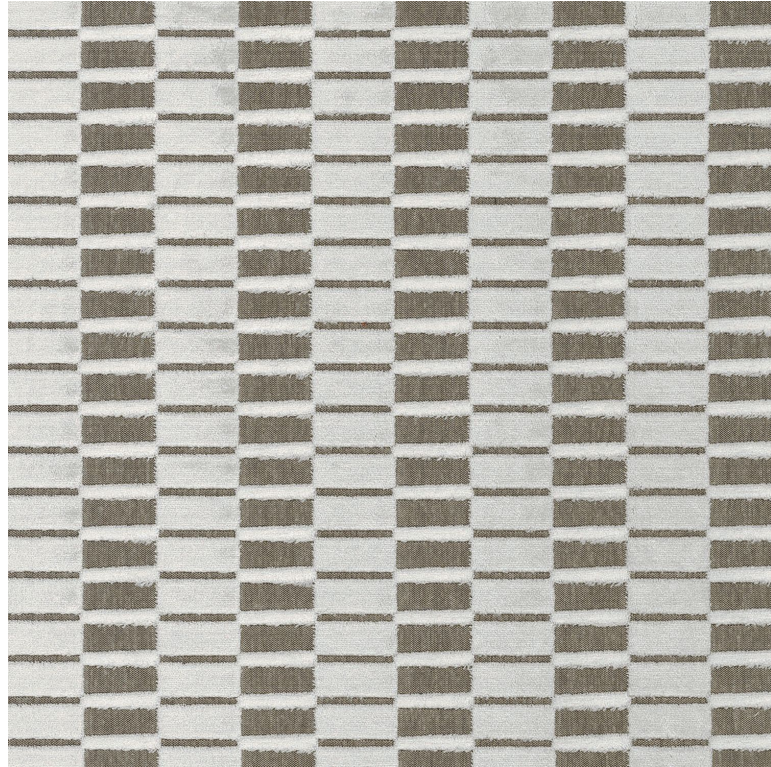


Cleaning instructions



Country of origin

India



4 variations

