

# Nuages

Fabrics CAMENGO

*Collection* [NUIT D'ETE](#)

*Reference* 44350451

*Colors* Lin

*Composition* 58 % li ; 42 % co - wadding : 100% pes - lining : 70% pes - 30%co

*Useful width* 276 cm / 109 Inches

*Match* Straight match

*Pattern direction* Non-railroaded

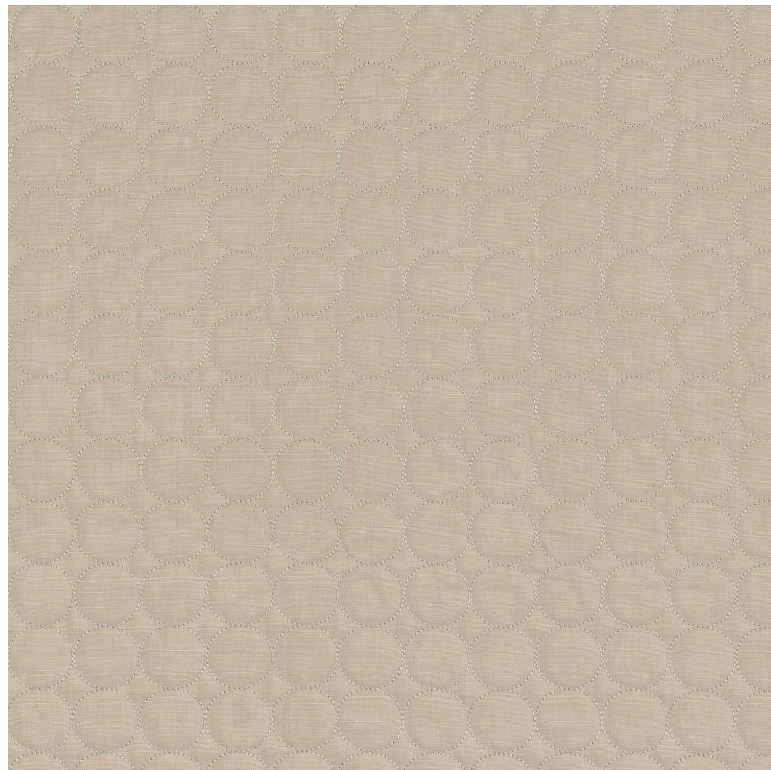
*Weight in g/m<sup>2</sup>* 440

*Use*   

*Care*      

*Horizontal repeat* 3 cm / 1 Inches

*Vertical repeat* 3 cm / 1 Inches



**6 variations**

