

# CASAMANCE

## Fox

### Fabrics CASAMANCE

Collection

[MOHAVE](#), [PANACHE](#)

Colors

MASTIC

Reference

39340465

Composition

37 % CO ; 34 % PC ; 18 % WO ; 11 % PES

Useful width

140 cm / 55 Inches

Match



Martindale

30000

Martindale upholstery : Between 20 000 and 40 000 cycles (Martindale) and between 15,000 and 30,000 double rubs (Wyzenbeek)

Wyzenbeek

40000

Pattern direction

Non-railroaded

Weight in g/m<sup>2</sup>

560

Use

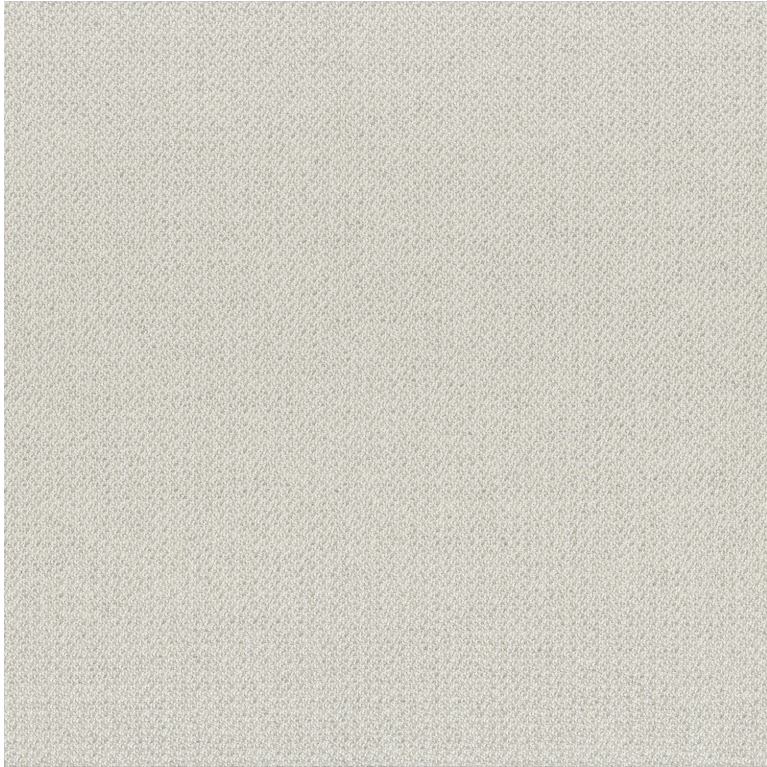


Cleaning instructions



Country of origin

Italy



10 variations

