

Mont Fuji

Fabrics MISIA

Collection

[VOYAGE A KYOTO-SHI](#)

Colors

VERT OLIVE

Reference

M165603

Composition

38 % PES ; 27 % CO ; 15 % PA ; 14 % VI ; 6 % PC

Useful width

140 cm / 55 Inches

Match



Martindale

25000

Medial use upholstery : Between 20 000 and 40 000 cycles (Martindale) and between 15,000 and 30,000 double rubs (Wyzenbeek)

Wyzenbeek

75000

Pattern direction

Non-railroaded

Weight in g/m²

450

Use

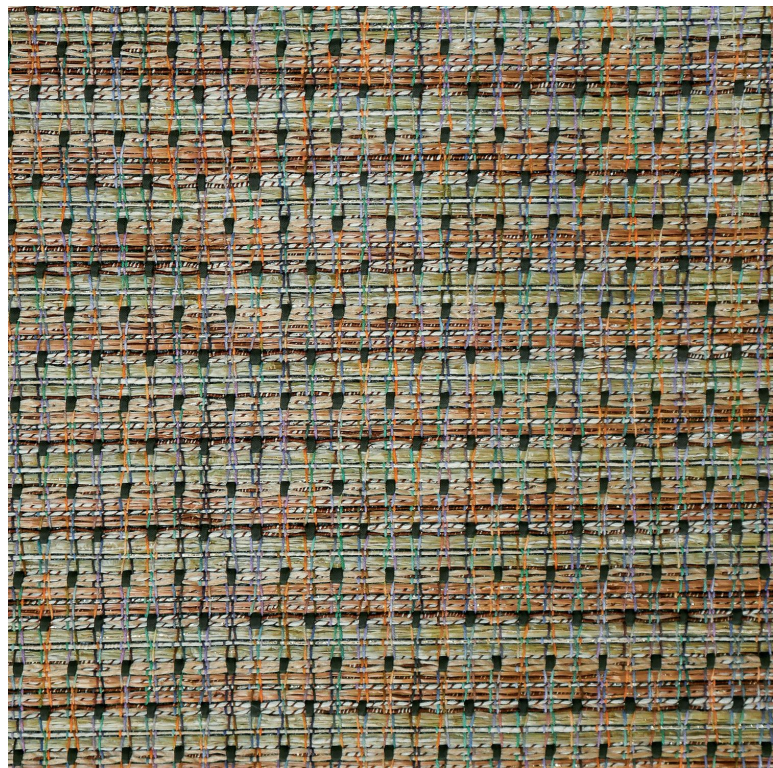


Cleaning instructions



Country of origin

Italy



4 variations

