

# Chiado

## Fabrics CAMENGO

*Collection* [ALFAMA](#), [RAINBOW 4](#)

*Reference* 49220539

*Colors* Noir

*Composition* 52 % pes ; 48 % vi

*Useful width* 136 cm / 54 Inches

*Match* Straight match

*Martindale* 35000

*Martindale upholstery* : Between 20 000 and 40 000 cycles (Martindale) and between 15,000 and 30,000 double rubs (Wyzenbeek)

*Wyzenbeek* 50000

*Pattern direction* Non-railroaded

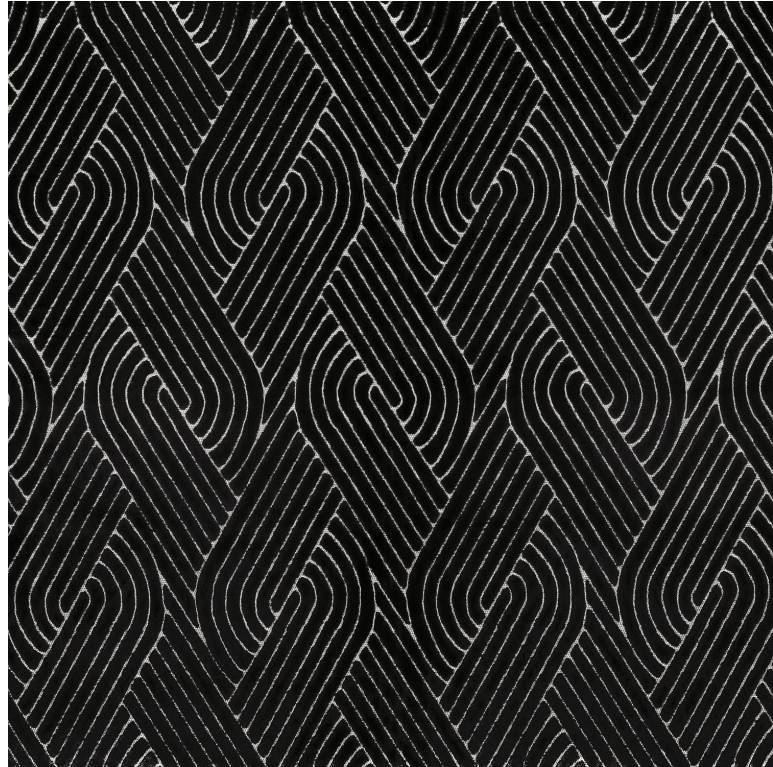
*Weight in g/m<sup>2</sup>* 550

*Use* 

*Care* 

*Horizontal repeat* 18 cm / 7 Inches

*Vertical repeat* 32 cm / 13 Inches



**5 variations**

