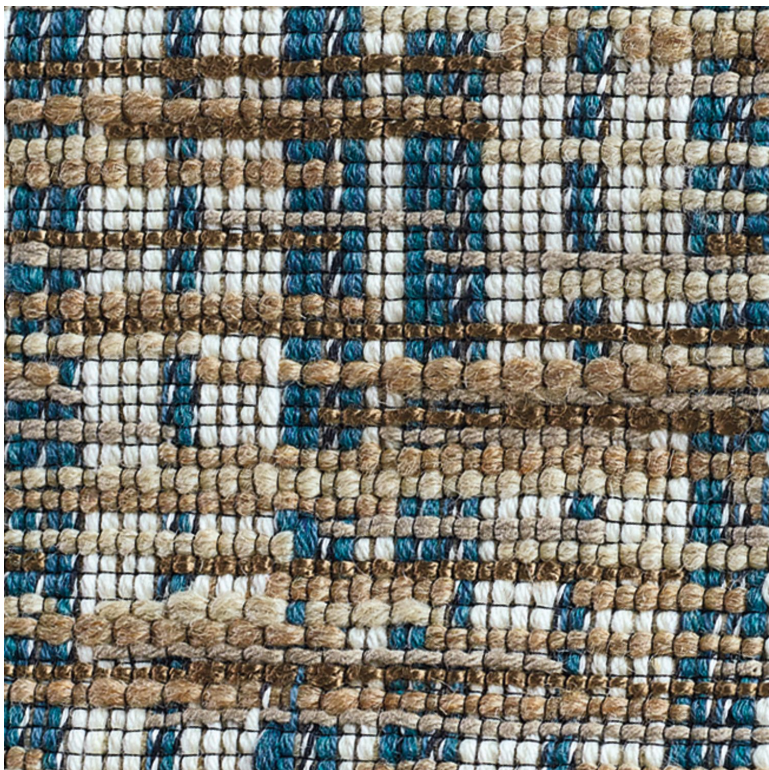









Terre des artistes



Fabrics MISIA

| | |
|-------------------------------|---|
| Collection | FRENCH RIVIERA |
| Reference | M289803 |
| Composition | 60 % wo ; 23 % co ; 10 % vi ; 4 % pes ; 3 % pa |
| Useful width | 128 cm / 50 Inches |
| Match | Straight match |
| Martindale | 30000 |
| Martindale use (Wyzenbeek) | Metallic use upholstery : Between 20 000 and 40 000 cycles (Martindale) and between 15,000 and 30,000 double rubs |
| Wyzenbeek | 20000 |
| Pattern direction | Non-railroaded |
| Weight in g/m ² | 600 |
| Use |   |
| Care |      |
| Country of origin | United states |
| Horizontal repeat | 32 cm / 13 Inches |
| Vertical repeat | 45 cm / 18 Inches |

5 variations

