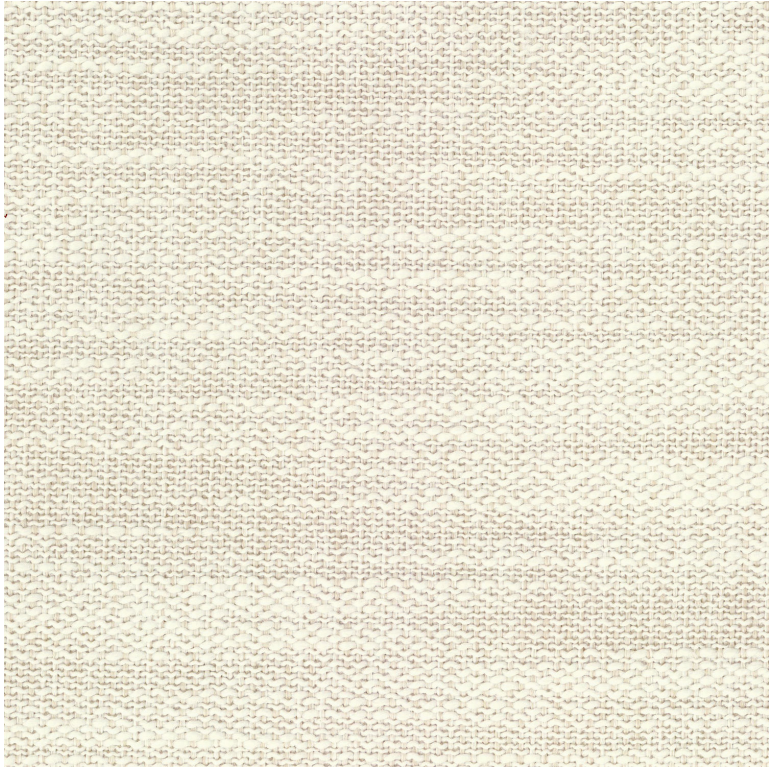


# Péninsula uni

Fabrics MISIA



Collection [ESTIVAL](#)

Reference M359902

Composition 100 % pp - solution dyed

Useful width 137 cm / 54 Inches

Match Free match


Martindale 30000

Martindale use upholstery : Between 20 000 and 40 000 cycles (Martindale) and between 15,000 and 30,000 double rubs (Wyzenbeek)

Wyzenbeek 40000

Pattern direction 0

Weight in g/m<sup>2</sup> 540

Use  

Care     

Country of origin Belgium

Features Breathable  
Mold resistance  
Colour fastness to light >7-8 (Scale : 8)

**1 variation**

