

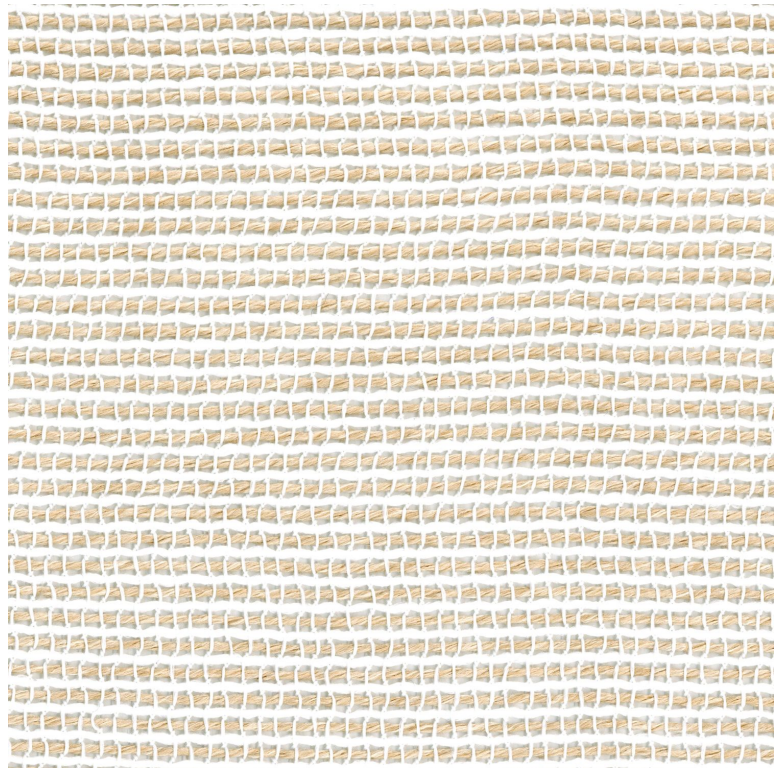


# Andia

Fabrics MISIA

Collection	<a href="#">ESTIVAL</a>
Reference	M365602
Composition	100 % pes fr - solution dyed
Useful width	330 cm / 130 Inches
Shrinkage	<1%
Match	Free match
Pattern direction	Non-railroaded
Weight in g/m <sup>2</sup>	250
Performance Accoustique	aw - 0.15
Use	
Care	
Country of origin	Italy
Features	Breathable Mold resistance
Confection tips	Fastness to chlorinated and sea water >4-5 (Scale : 5) Fabrics can be turned for continiuous confection with visual aspect change Colour fastness to light >7-8 (Scale : 8)



## 2 variations

