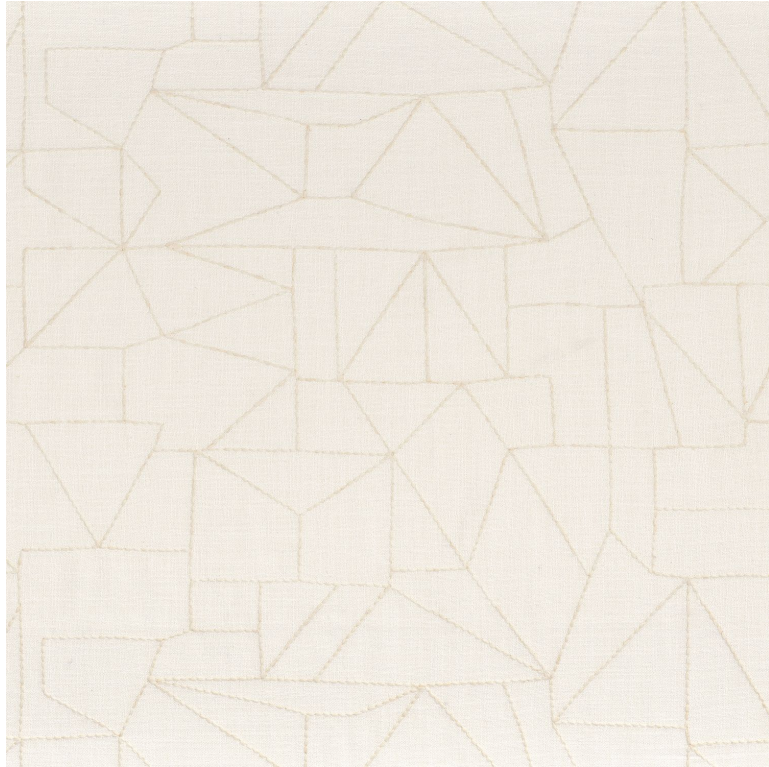


CASAMANCE

Elu

Fabrics CASAMANCE

<i>Collection</i>	FAVORI
<i>Reference</i>	13200126
<i>Colors</i>	Ivoire
<i>Composition</i>	100 % pes - polylinen embroidery
<i>Useful width</i>	283 cm / 111 Inches
<i>Shrinkage</i>	<2%
<i>Match</i>	Straight match
<i>Pattern direction</i>	Railroaded
<i>Weight in g/m²</i>	270
<i>Use</i>	
<i>Care</i>	
<i>Country of origin</i>	India
<i>Horizontal repeat</i>	62 cm / 24 Inches
<i>Vertical repeat</i>	47 cm / 19 Inches



1 variation

