






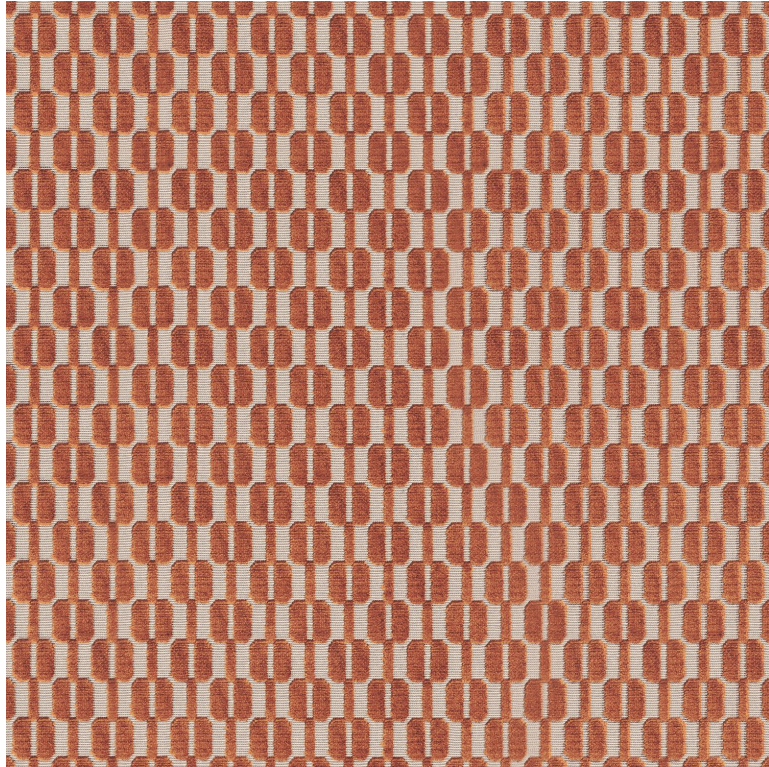


# CASAMANCE

## Inseparables

### Fabrics CASAMANCE

|  |   |
|--|---|
| <i>Collection</i>                              | <a href="#">DEFILE</a> , <a href="#">MANIFESTO</a>  |
| <i>Reference</i>                               | 31580650  |
| <i>Composition</i>                             | 82 % vi ; 18 % pes  |
| <i>Useful width</i>                            | 139.5 cm / 55 Inches  |
| <i>Match</i>                                   | Straight match  |
| <i>Martindale</i>                              | 40000   |
| <i>Martindale upholstery :<br/>(Wyzenbeek)</i> | Between 20 000 and 40 000 cycles (Martindale) and between 15,000 and 30,000 double rubs   |
| <i>Wyzenbeek</i>                               | 45000   |
| <i>Pattern direction</i>                       | Non-railroaded  |
| <i>Weight in g/m<sup>2</sup></i>               | 699   |
| <i>Performance Accoustique</i>                 | aw - 0.15   |
| <i>Use</i>                                     |     |
| <i>Care</i>                                    |      |
| <i>Country of origin</i>                       | Belgium   |
| <i>Horizontal repeat</i>                       | 5 cm / 2 Inches   |
| <i>Vertical repeat</i>                         | 5 cm / 2 Inches   |



6 variations

