

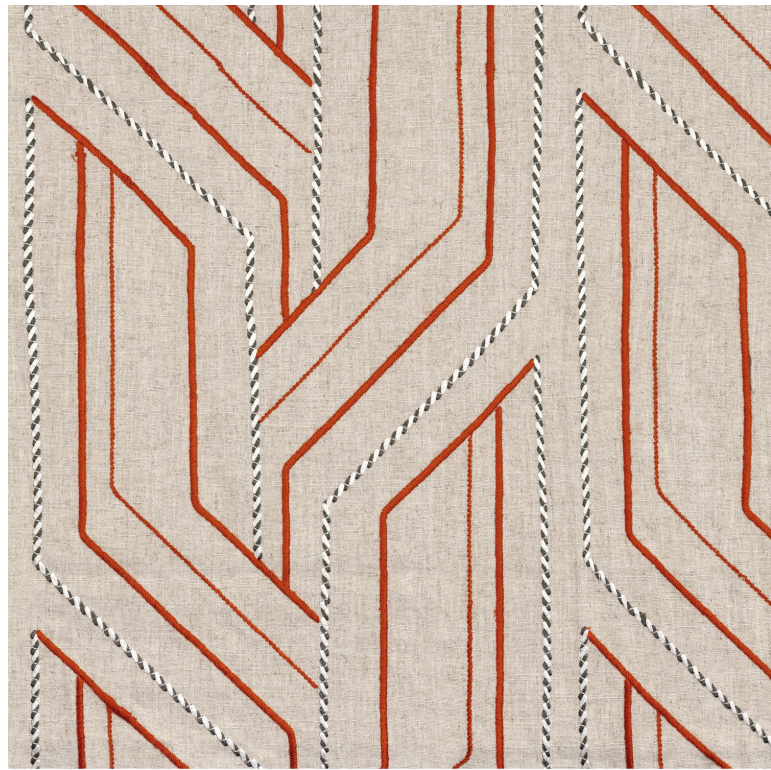


CASAMANCE

Inka

Fabrics CASAMANCE

| | |
|----------------------------------|--|
| <i>Collection</i> | VALVIDIA |
| <i>Reference</i> | 32910551 |
| <i>Colors</i> | Flax / orange |
| <i>Composition</i> | 70 % vi ; 30 % li - viscose, cotton and polyester embroidery |
| <i>Useful width</i> | 128 cm / 50 Inches |
| <i>Match</i> | Straight match |
| <i>Pattern direction</i> | Non-railroaded |
| <i>Weight in g/m²</i> | 500 |
| <i>Use</i> |  |
| <i>Care</i> |  |
| <i>Country of origin</i> | India |
| <i>Horizontal repeat</i> | 32 cm / 13 Inches |
| <i>Vertical repeat</i> | 31 cm / 12 Inches |



5 variations

