

# CASAMANCE

## Lovers

Fabrics CASAMANCE

*Collection*

*Reference*

*Composition*

53 % li ; 29 % pa ; 18 % pes

*Match*

Straight match

*Martindale*

60000

*Martindale use* Upholstery : superior or equal to 40 000 cycles (Martindale) and superior or equal to 30,000 double rubs (Wyzenbeek)

*Wyzenbeek*

60000

*Use*



*Care*



*Country of origin*

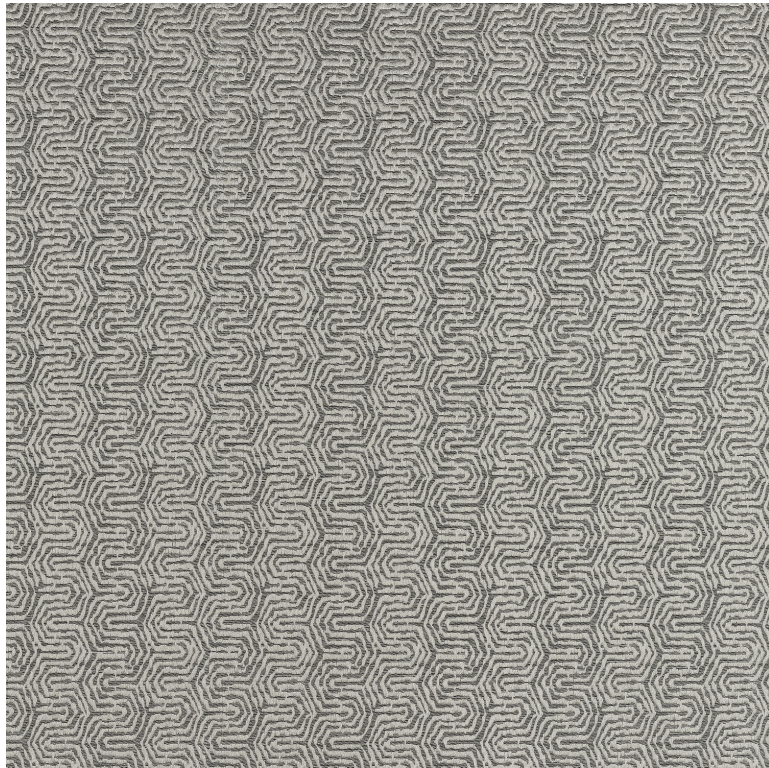
India

*Horizontal repeat*

6 cm / 2 Inches

*Vertical repeat*

6 cm / 2 Inches



**0 variation**