

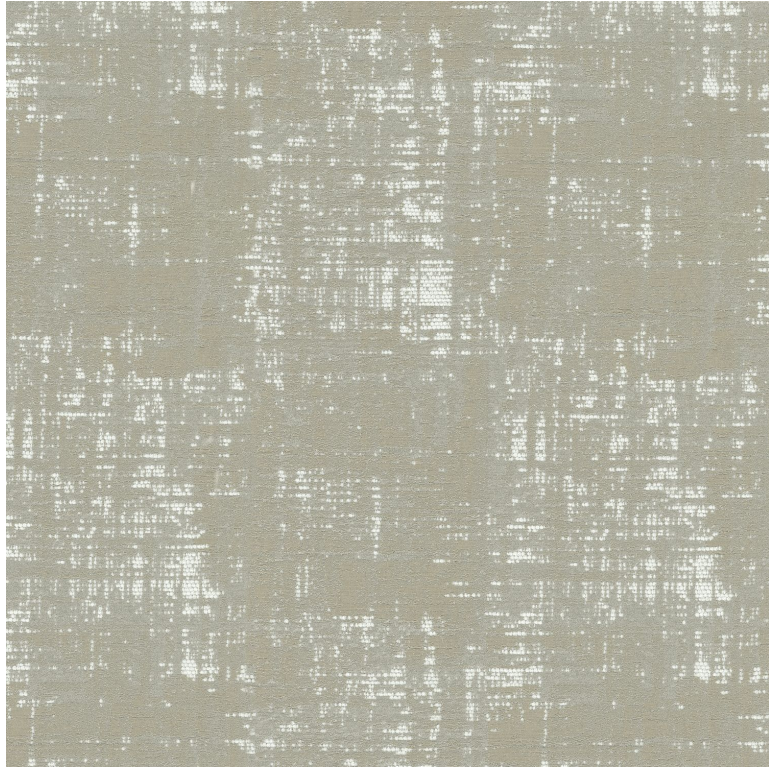


# CASAMANCE

## Dress code

### Fabrics CASAMANCE

|  |   |
|--|---|
| <i>Collection</i>  | <a href="#">GALLIERA</a>  |
| <i>Reference</i>   | 42300411  |
| <i>Composition</i>   | 52 % co ; 24 % vi ; 24 % pa   |
| <i>Useful width</i>  | 138 cm / 54 Inches  |
| <i>Match</i>   | Straight match  |
| <i>Martindale</i>  | 30000   |
| <i>Martindale use Upholstery : superior or equal to 40 000 cycles (Martindale) and superior or equal to 30,000 double rubs (Wyzenbeek)</i> |   |
| <i>Wyzenbeek</i>   | 80000   |
| <i>Weight in g/m<sup>2</sup></i>   | 370   |
| <i>Use</i>   |               |
| <i>Care</i>  |              |
| <i>Country of origin</i>   | India   |
| <i>Horizontal repeat</i>   | 23 cm / 9 Inches  |
| <i>Vertical repeat</i>   | 26 cm / 10 Inches   |
| <i>Confection tips</i>   | For the upholstery oversee and use a tape/the fabric falls on the floor when making into curtains |



**7 variations**

