

# CASAMANCE

## Miki

### Fabrics CASAMANCE

Collection

[MAUPITI](#)

Reference

44520678

Composition

100 % pp

Useful width

138 cm / 54 Inches

Match

Free match

Martindale

30000

Martindale  
(Wyzenbeek)

Minimum upholstery : Between 20 000 and 40 000 cycles (Martindale) and between 15,000 and 30,000 double rubs

Wyzenbeek

30000

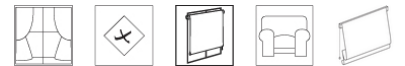
Pattern direction

Non-railroaded

Weight in g/m<sup>2</sup>

610

Use



Care

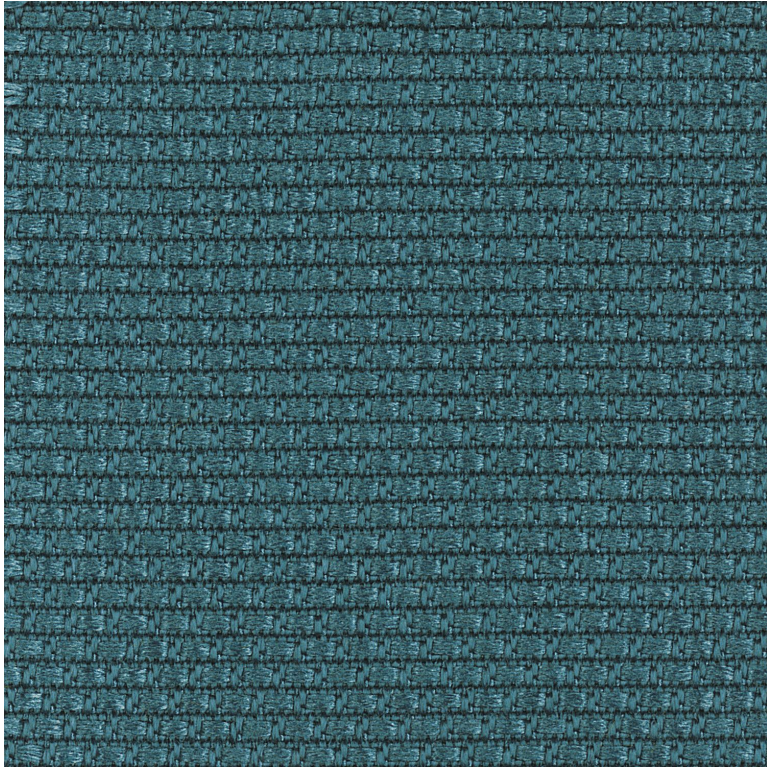


Country of origin

Italy

Features

Fastness to chlorinated and sea water >4-5 (Scale : 5)  
Colour fastness to light >7-8 (Scale : 8)



7 variations

