

# CASAMANCE

## Mobel

### Fabrics CASAMANCE

Collection

[MANIFESTO](#), [POLYCHROMIE](#)

Reference

45970122

Composition

55 % li ; 25 % pa ; 20 % pes

Useful width

138 cm / 54 Inches

Match

Straight match

Martindale

30000

Martindale upholstery : Between 20 000 and 40 000 cycles (Martindale) and between 15,000 and 30,000 double rubs (Wyzenbeek)

Wyzenbeek

40000

Pattern direction

Non-railroaded

Weight in g/m<sup>2</sup>

360

Use



Care



Country of origin

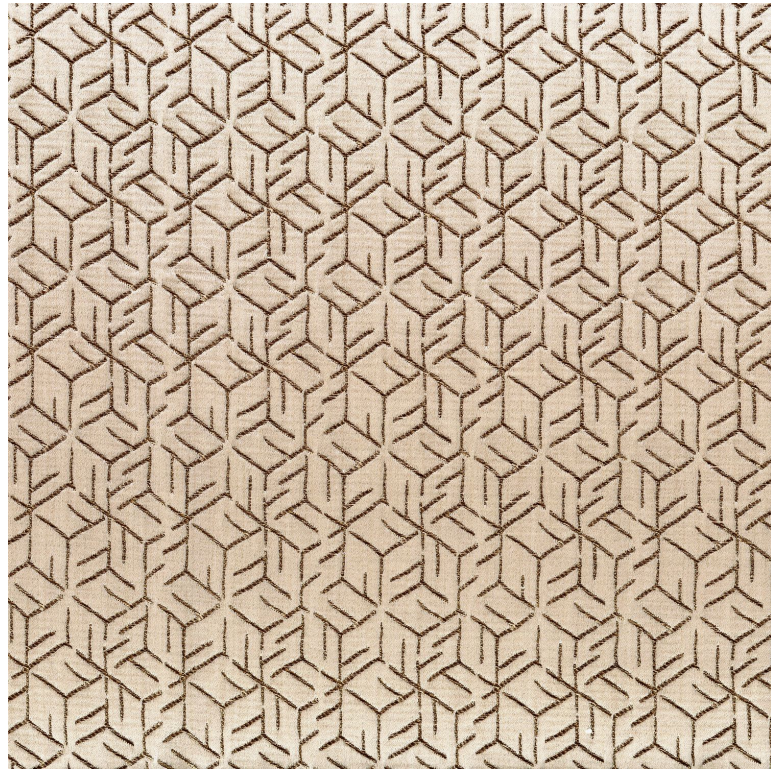
India

Horizontal repeat

6 cm / 2 Inches

Vertical repeat

6 cm / 2 Inches



**6 variations**

