

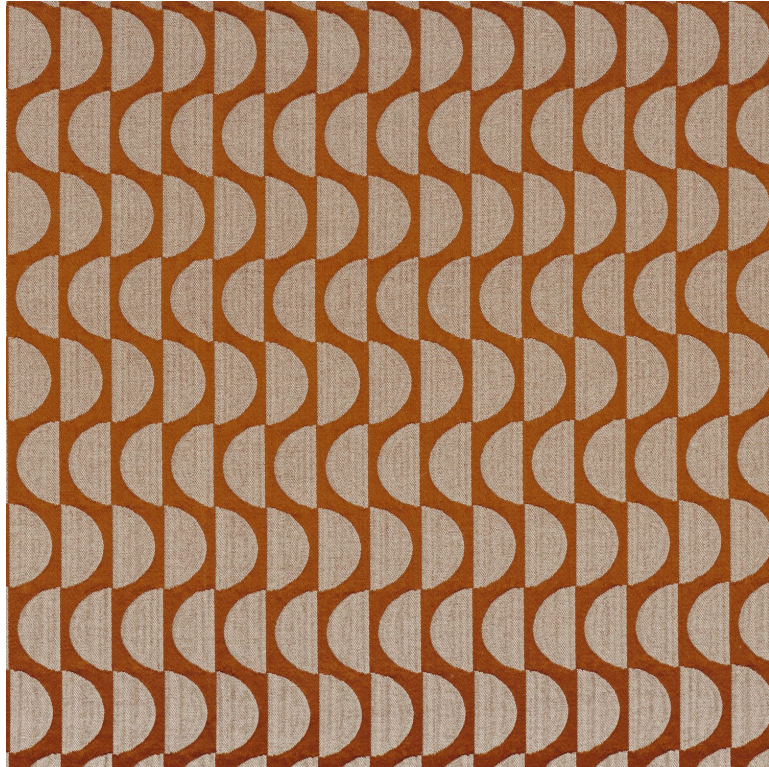


CASAMANCE

Dual

Fabrics CASAMANCE

<i>Collection</i>	RITOURNELLE
<i>Reference</i>	48250884
<i>Composition</i>	65 % pa ; 24 % li ; 11 % pes
<i>Useful width</i>	141 cm / 56 Inches
<i>Match</i>	Straight match
<i>Martindale</i>	50000
<i>Martindale use (Wyzenbeek)</i>	High use Upholstery : superior or equal to 40 000 cycles (Martindale) and superior or equal to 30,000 double rubs (Wyzenbeek)
<i>Wyzenbeek</i>	50000
<i>Pattern direction</i>	Non-railroaded
<i>Weight in g/m²</i>	234
<i>Performance Accoustique</i>	aw - 0.15
<i>Use</i>	
<i>Care</i>	
<i>Country of origin</i>	India
<i>Horizontal repeat</i>	3 cm / 1 Inches
<i>Vertical repeat</i>	9 cm / 4 Inches



Features

Confection tips

For the upholstery oversew and use a tape/the fabric falls on the floor when making into curtains

8 variations

