

Gugg velvet

Fabrics CAMENGO

Collection [BILBAO VELVET](#), [BILBAO](#)

Reference 30840102

Colors Blush

Composition 100 % pes

Useful width 140 cm / 55 Inches

Shrinkage <1%

Match Straight match

Martindale 35000

Martindale upholstery : Between 20 000 and 40 000 cycles (Martindale) and between 15,000 and 30,000 double rubs (Wyzenbeek)

Wyzenbeek 40000

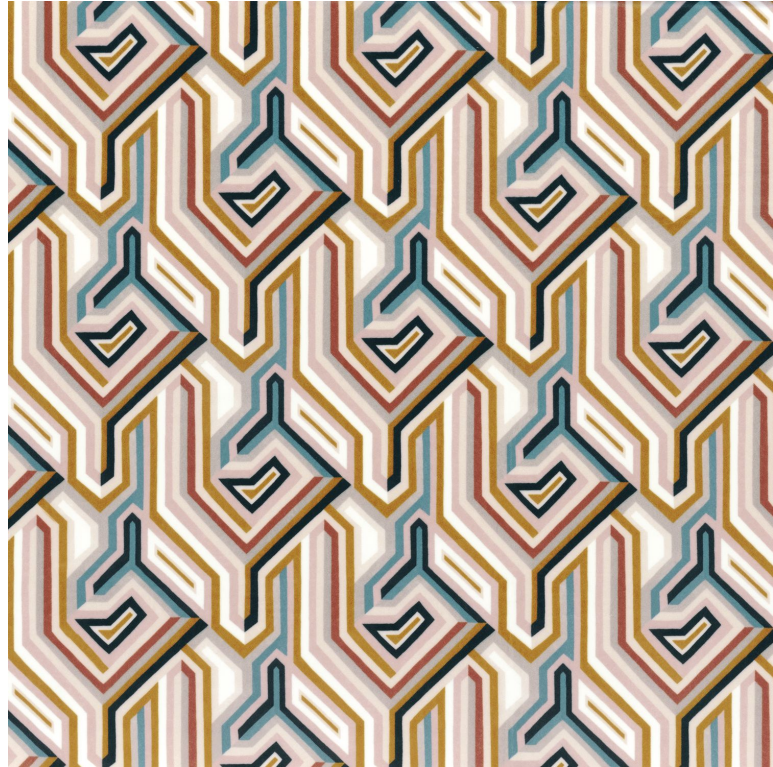
Pattern direction Non-railroaded

Weight in g/m² 450

Use 

Care 

Country of origin India



Horizontal repeat

23 cm / 9 Inches

Vertical repeat

22 cm / 9 Inches

5 variations

