

# Estèque

## Fabrics CAMENGO

*Collection* [KAOLIN](#)

*Reference* 33880105

*Composition* 60 % co ; 40 % pes - cotton embroidery

*Useful width* 288 cm / 113 Inches

*Shrinkage* <3%

*Match* Straight match

*Pattern direction* Non-railroaded

*Weight in g/m<sup>2</sup>* 120

*Use* 

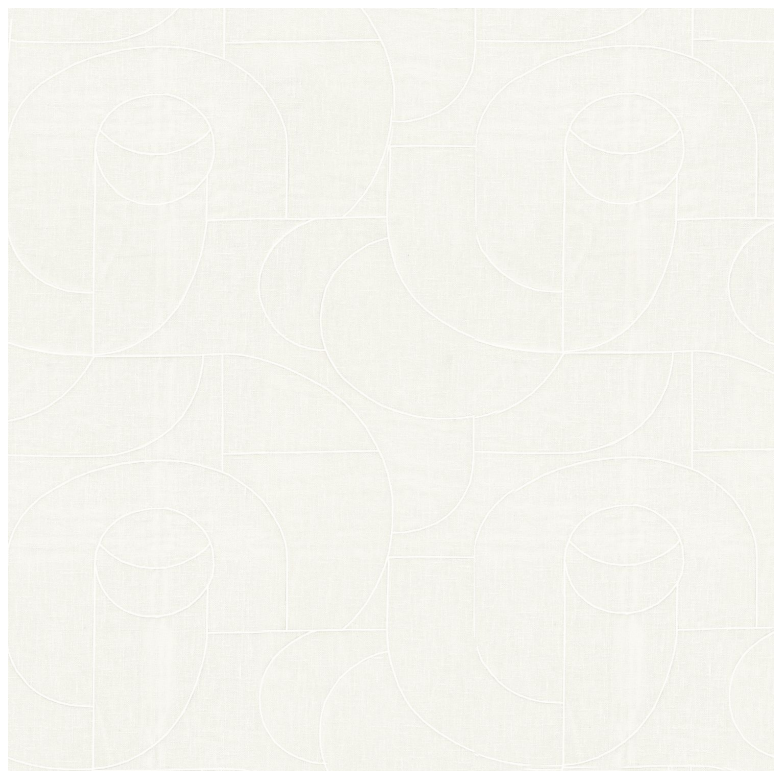
*Care*     

*Country of origin* India

*Horizontal repeat* 36 cm / 14 Inches

*Vertical repeat* 32 cm / 13 Inches

*Confection tips* Fabrics can be turned for continuous confection with visual aspect change



**2 variations**

