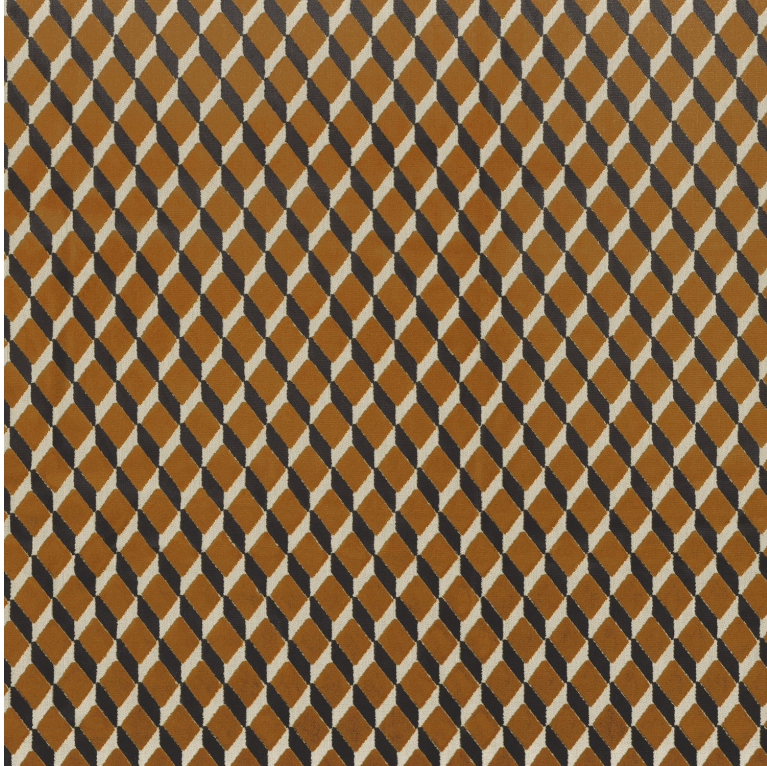


District

Fabrics CAMENGO



Collection [RAINBOW 4](#)

Reference 44930341

Composition 75 % vi ; 25 % pes

Useful width 140 cm / 55 Inches

Match Straight match

Martindale 30000

Martindale upholstery : Between 20 000 and 40 000 cycles (Martindale) and between 15,000 and 30,000 double rubs (Wyzenbeek)

Pattern direction Non-railroaded

Weight in g/m² 586

Performance Accoustique aw - 0.15

Use 

Care 

Country of origin Belgium

Horizontal repeat 7 cm / 3 Inches

Vertical repeat 3 cm / 1 Inches

5 variations

