

# Roxane

Fabrics CAMENGO

*Collection*

[CHICAGO](#), [CHICAGO CAM](#)

*Reference*

*Composition*

80 % pes ; 20 % co - polyester embroidery

*Useful width*

285 cm / 112 Inches

*Shrinkage*

<2%

*Match*

Straight match

*Pattern direction*

Non-railroaded

*Weight in g/m<sup>2</sup>*

115

*Performance Accoustique*

aw - 0.15

*Use*



*Care*



*Country of origin*

India

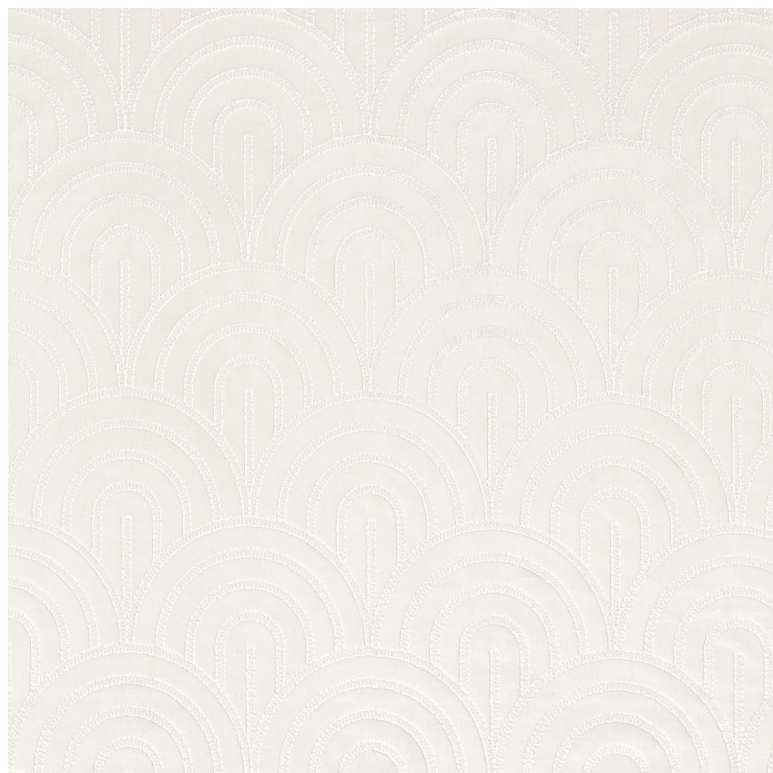
*Horizontal repeat*

15 cm / 6 Inches

*Vertical repeat*

15 cm / 6 Inches

*Features*



**0 variation**