

Tramea fr

Fabrics CAMENGO

Collection [ARTEA](#)

Reference 48920698

Composition 50 % pes recycled ; 50 % pc recycled acrylic recyclé - backcoating : cotton and fr

Useful width 142 cm / 56 Inches

Martindale 40 000

Martindale use Upholstery : superior or equal to 40 000 cycles (Martindale) and superior or equal to 30,000 double rubs (Wyzenbeek)

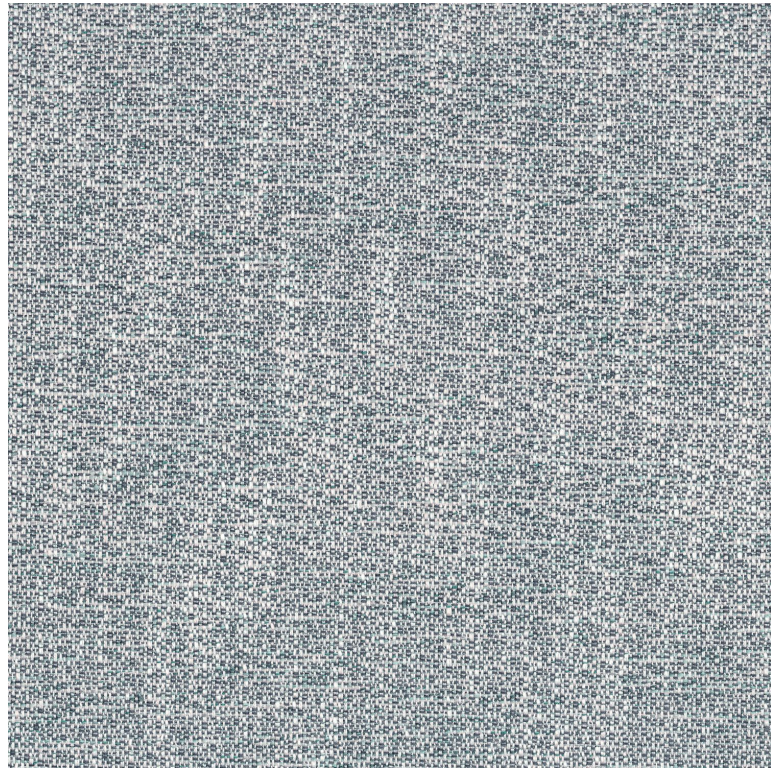
Pattern direction Non-railroaded

Performance Accoustique aw - 0.15

Care 

Country of origin Turkey

Features



11 variations

