

Matin calme

Fabrics MISIA

Collection [CAPRISSIMA](#)

Reference M495203

Composition 32 % vi ; 15 % li ; 23 % pc ; 12 % pes ; 9 % co ; 6 % pa - -

Useful width 129 cm / 51 Inches

Match Straight match

Martindale 20000

Martindale use upholstery : Between 20 000 and 40 000 cycles (Martindale) and between 15,000 and 30,000 double rubs (Wyzenbeek)

Wyzenbeek 60000

Pattern direction Non-railroaded

Weight in g/m² 790

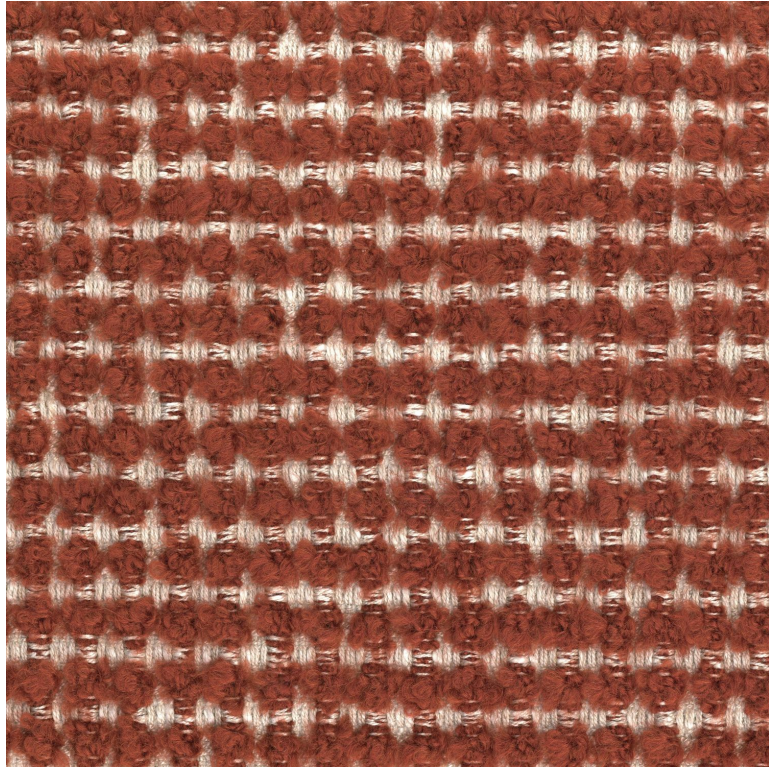
Performance Accoustique aw - 0.15

Use 

Care 

Country of origin Italy

Features



3 variations

