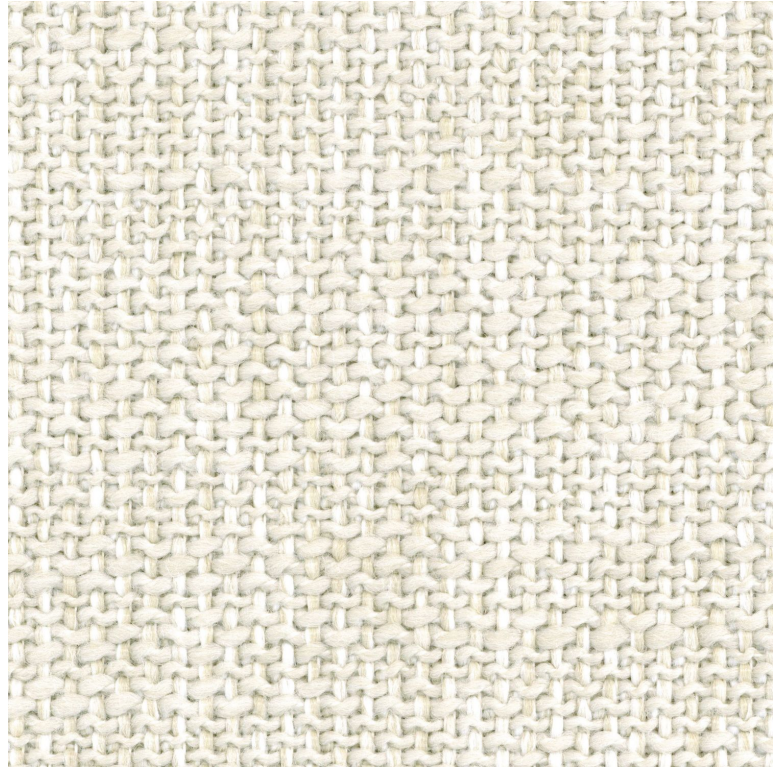








# Procida uni

## Fabrics MISIA



<i>Collection</i>	<a href="#">ÉVIDENCE</a>
<i>Reference</i>	M515101
<i>Composition</i>	100 % pp - solution dyed
<i>Useful width</i>	138 cm / 54 Inches
<i>Match</i>	Free match
<i>Martindale</i>	50000
<i>Martindale use</i> (Wyzenbeek)	Hotel use Upholstery : superior or equal to 40 000 cycles (Martindale) and superior or equal to 30,000 double rubs
<i>Wyzenbeek</i>	65000
<i>Pattern direction</i>	Non-railroaded
<i>Weight in g/m<sup>2</sup></i>	645
<i>Performance Accoustique</i>	aw - 0.15
<i>Use</i>	
<i>Care</i>	    
<i>Country of origin</i>	Belgium
<i>Features</i>	Breathable Mold resistance

## 1 variation

