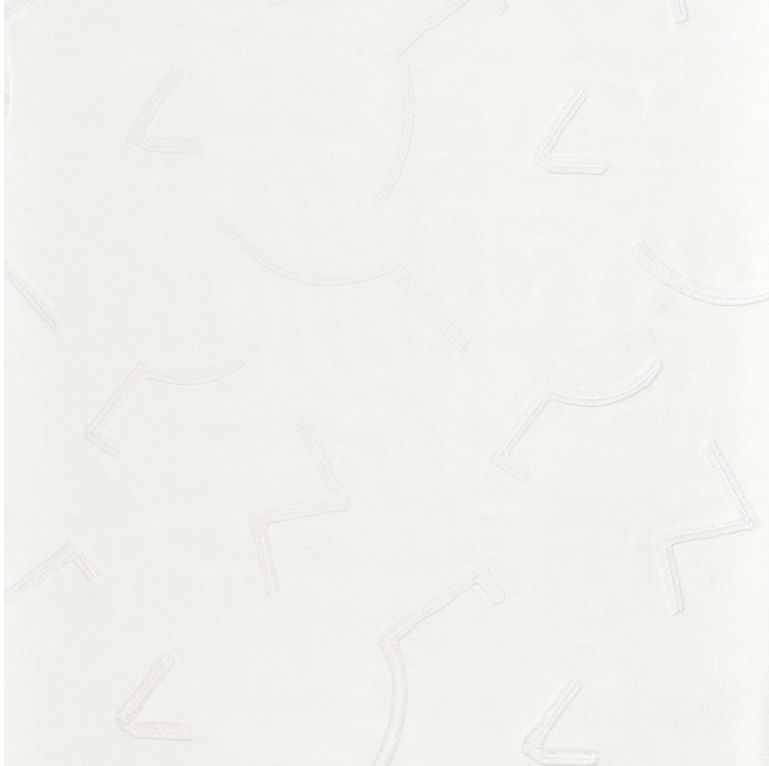




# Isor

## Fabrics CAMENGO



<i>Collection</i>	<a href="#">LUMATERRA</a>
<i>Reference</i>	52050192
<i>Composition</i>	51 % pes ; 49 % co organic - cotton embroidery
<i>Useful width</i>	288 cm / 113 Inches
<i>Shrinkage</i>	<1%
<i>Match</i>	Straight match
<i>Pattern direction</i>	Railroaded
<i>Weight in g/m<sup>2</sup></i>	145
<i>Use</i>	 
<i>Care</i>	    
<i>Country of origin</i>	India
<i>Horizontal repeat</i>	32 cm / 13 Inches
<i>Vertical repeat</i>	48 cm / 19 Inches
<i>Confection tips</i>	Fabrics can be turned for continious confection with visual aspect change

**1 variation**

