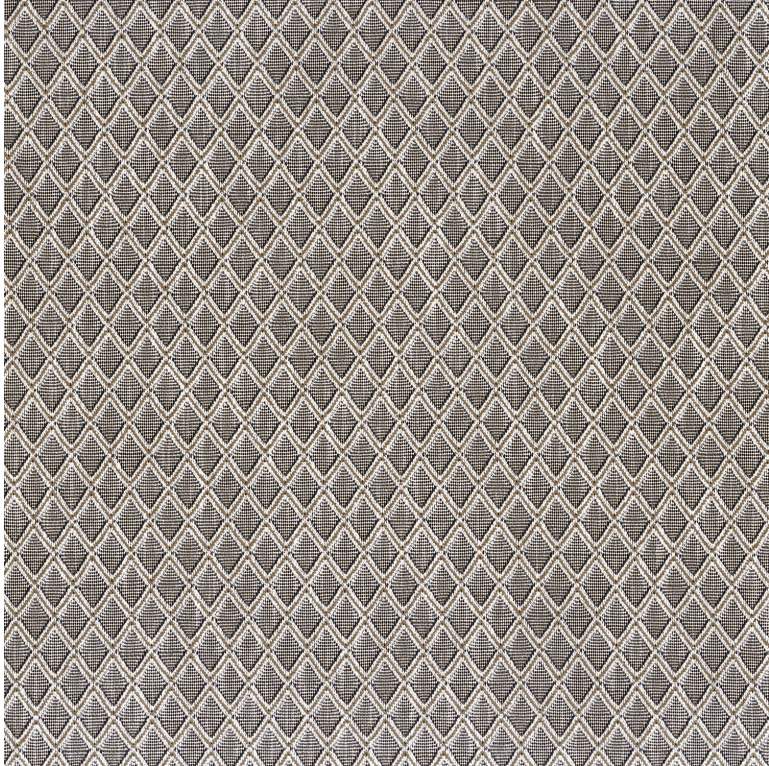


# Sandori

Fabrics CAMENGO



*Collection* [MANDARA](#)

*Reference* 52320493

*Composition* 65 % pes ; 35 % pes recycled - -

*Useful width* 138 cm / 54 Inches

*Shrinkage* <2%

*Match* Straight match

*Martindale* 50000


*Martindale* Home Textile Upholstery : superior or equal to 40 000 cycles (Martindale) and superior or equal to 30,000 double rubs (Wyzenbeek)

*Wyzenbeek* 75000

*Pattern direction* Non-railroaded

*Weight in g/m²* 800

*Use*  

*Care*     

*Easy Clean* 

*Country of origin* India

*Horizontal repeat*

3 cm / 1 Inches

---

*Vertical repeat*

5 cm / 2 Inches

---

*Features*

---

## 5 variations

